



Shorelines

Rock River Homeowners Association Newsletter

P.O. Box 2813 Loves Park, IL 61132-2813

Volume 32 Issue 1

Summer 2021

The summer of 2021 is here and water levels are doing great. It is a far cry from the flood years of 2008 and 2019. I can't say enough good things about our Sheriff Gary Caruana and his efforts along with Com-Ed to operate our dam and the gates in a positive manner for Winnebago County. Having all 4 gates working and completely closed is helping to maintain our recreational pool level for boating in our area. In talking with the NWS Scott Lincoln, he has shared previous data with me showing that we are at drought, but are no where near historic low levels yet, so that is a positive. We continue to help maintain sand bar danger buoys at locations as needed to keep boaters informed and safe. We also will be out replacing some of the bridge marker lights soon to aid in night time navigation of the river. I can't stress enough how important it is to have solar lights on our docks to keep our river safe.

Your donations are greatly appreciated to allow us to continue to fund these efforts. This is our annual membership drive for 2021 and look forward to your support again this year. With the whole covid epidemic it became very apparent that families have taken to the river to have fun. Boat and jet ski sales are through the roof. This is evident by the large number of boaters out every weekend. It is such a treat to be out at night with just a short sleeve shirt on. Let's hope the warm summer trend continues. One of my biggest concerns is boaters without navigation lights at night. We have all had a bulb burn out when we least expect it. It is a good idea to have a flash light on board your boat should this happen. A clear or red solo cut pated to the flashlight can get you back home if this should happen. The DNR has had a noticeable presence this year with their new air boat, john boat and 2 deep V boats. They are enforcing the no wake zone at Martin Park. Also they monitoring the use of the kill switch and lanyard by a boat's driver. Most of us only use these when on a jet ski, but the law says all boat operators must wear them. If your boat has a kill switch, make sure the red cord is attached to it and you have it attached to your wrist or body when operating your boat. The other law that we need to remember is if you see law enforcement with a boater pulled over, you must slow down and pass them at no wake. They will issue you a ticket for this if not followed. Check your fire extinguisher, horn, paddle, throwable and life jackets. Also your battery must be strapped down and the terminals covered with the battery box cover or rubber boot. The straps tend to dry rot over time so make sure to check it before going out on the water.

Thank you for your continued support of the RRHAS and take just a minute to fill out your annual renewal application enclosed in this newsletter and send it in.

Have a safe and great 2021 out on the river everyone!

Steve Lucas, RRHA President

JEWELRY CONCEPTS



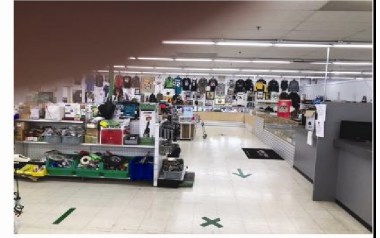
986 W. Riverside Blvd. Rockford IL 61103

JEWELRY CONCEPTS - 815-877-2220

We are a full service jewelry store, we do repairs and customize your precious pieces with our state of the art laser welder and laser engraver. We service watch batteries and watch bands. We have the largest selection of estate gold and silver in the state line area. We buy gold and silver! Jewelry Concepts is your jewelry connection and one stop shop!



PAWN DADDY



PAWN DADDY - 815-654-7296

Who's Your Daddy, PAWN DADDY!

Stop in and check out our huge selection of merchandise in our newly expanded sales floor. We Pawn, Buy and Sell Gold, Silver, Electronics, Jewelry, Tools, Musical Instruments, Household Appliances, Knives, Jerseys, Collectibles and so much more!



Past and Present Rock River Homeowners Association Projects

If you're wondering where your dues and other donation monies are being used to improve our Rock River, here are just a few of the completed and on going Rock River improvements your association has accomplished! (Not in any specific order!)

1. Installed commercial marine navigational solar lights on bridges and maintain with new bulbs and batteries when needed. If you boat at night, these are a great help to see what pass to use and where the supports are.
2. Installed directional arrow & TALL navigation signs on the bridges to help guide boat traffic under bridges.
3. Purchased additional buoys for no wake and hazard areas and installed flashing lights on them.
4. Purchased a new Bimini shade top for the Sherriff's patrol boat.
5. Installed and maintain news and information stations at launch areas.
6. Installed navigation solar light for entry to Sports Core launch on shore.
7. Construction and installation of a static river level gauge at Davis Park in 2014.
8. Purchase, installation and yearly fees of an official U.S.G.S electronic gauge at Davis Park at the dam for spring of 2015, this is great importance to everyone viewing the water level gauges, as it will give the level at the dam.
9. Create and maintain a professional Website that shows all area river gauges in one page, and other important Rock River information to home owners and boaters.
10. Donate money to the Ski Broncs yearly for their program to further the Rock River's value as an entertainment venue.
11. Publication of the Rock River Homeowners Association Newsletter to keep homeowners and businesses on the river informed.
12. Support by board members and homeowners by volunteering during Rock River cleanup events.
13. Removal of trees to safer areas after flooding.
14. NO WAKE signs and RIVER CLOSED signs at boat launches during high water and flooding.
15. Paid fees to keep river gauge operating.
16. Do you have a project you'd like to see addressed? Send us a note or call any of the board members!

BRIDGE NAVIGATIONAL HEIGHT SIGNS

When you're navigating up or down the river and going under the various bridges, look for the "Arrow & TALL" signs on North and south areas of the bridges, for the best boat navigation under the bridge. The preferred space between the pylons will be marked with Arrow signs, and under some of the lower bridges, a "TALL" sign will guide you to the tallest part of the bridge. This is especially helpful during high water if you have a taller boat or boat structure.



Steve Lucas, Owner

6212 Park Ridge Rd. Loves Park, IL 61111

815-543-8742 (office) 815-243-8742 (cell) 815-654-8772 (fax)



Dock with Pontoon Lift & Canopy



Shore Stabilization with-
Limestone Rip Rap wall

My fellow Rock River residents, I have been selling boat lifts and docks for 32 years on our beautiful Rock River. I would have to say I love the river and all it has to offer. Whether having fun on it in the summer or just looking at it on a cold winter day, I would not have asked for a better place to live. During the summer months after all the docks are in, I am able to help a few residents with shoreline work. Whether it's a small repair or a major job, I take great pride in every job. My goal is to have my work last a lifetime. I also do many odd jobs like trimming river trees that are only accessible by water. I know that I am sometimes hard to get a hold of, but once I commit to a job I make sure the work is done to the best of my ability. I look forward to the remaining summer with great excitement. If I can help you with a project, just drop me a message or send a text. Thanks again for the past 32 years and I look forward to the next 32!

Steve Lucas

NEED A NEW ROOF?



CJwhiteford
ROOFING INC.

815.243.1999

www.cjwhitefordroofing.com
cjwroofing@me.com

Fast. Reliable. **Honest.**

BOAT GAS AVAILABLE

10AM - 8PM *NO GAS/DOCK CLOSED DURING WEDDING SERVICES
SEE DOCKSIDE BAR FOR SERVICE
SEE HOSTESS FOR SEATING

Grab P&B To-Go!
FOOD. BEER. SELTZER.

Do You Make These 3 Boating Safety Mistakes? NEWS from BoatUS Boat Owners Association of The United States

A look at the data shows where you can improve safety aboard ANNAPOLIS, Md., June 30, 2020 – Most boaters don't like making mistakes, especially when it comes to safety. With the recent release of the U.S. Coast Guard's 2019 Recreational Boating Statistics, the BoatUS Foundation for Boating Safety and Clean Water recommends avoiding these three common boating mistakes to increase safety for all aboard.

1. Using your cellphone to make a call, check social media, use a nonboating app, send emails, watch videos or anything else that distracts you from safely operating your boat. This all adds up to operator inattention and improper lookout, which combined with operator inexperience, excessive speed, and alcohol use rank in the top five primary contributing factors in accidents. Just like you do in your car, stay off your phone or other portable devices. Boaters should learn the S.C.A.N. (Search, Concentrate, Analyze, and Negotiate) method to help you navigate safely and stay clear of other traffic.

2. Not taking a boating safety course. Many boaters only learn about boating safety from family or friends, which may not be the best education. Where instruction information was known, the 2019 report notes that 70% of deaths occurred on boats where the operator did not receive boating safety instruction. Don't wait until your state requires boating safety instruction – taking a course now will improve your chance for a safe day on the water. The BoatUS Foundation offers the only free, NASBLA-approved online boating safety course for 36 states.

3. Allowing guests to consume unlimited amounts of alcohol aboard your boat, even if the captain is sober. Recreational vessels operate under a wide range of hazardous conditions from the hot blazing sun to wind-whipped waves kicked up by a late afternoon thunderstorm. All of these combined with alcohol create a challenge for the person at the helm, who is legally responsible for everyone aboard. Alcohol use is the leading known contributing factor in fatal boating accidents, and statistics show it may be better to save it for when you and your guests are safely back at the dock.

ONE OF THE MOST DISTINCTIVE HOMES ON THE ROCK RIVER

9544 N 2nd Street, Roscoe, IL 61073

FOR SALE



Contact: Keith Kelly
815-509-3655

keithk@dickersonnieman.com



Set on 5 private acres overlooking a gracious bend of the Rock River, just minutes from downtown Rockford and less than an hour from Madison, lies one of the most distinctive homes offered for sale in Winnebago County. Of stunning architectural beauty, this award-winning designed home is the work of local architect, Gary Anderson. With a total of approximately 5600 sq. ft., this custom-built brick and stone structure offers modern amenities for comfortable family living yet easily accommodates large entertainment and private events. The attention to detail and emphasis on proportions and craftsmanship are unparalleled. Featuring spectacular river views from nearly every room in the house. This extraordinary home contains a total of 4 bedrooms, 3.5 baths and 3 fireplaces, formal dining room, and commercial-sized gourmet kitchen, lower level family room, 3-car garage, in-ground pool and direct access to a shared boat dock.

Included in the sale directly adjacent to the 5 acres where the home sits, is a 13-acre mixed prairie and wooded natural area owned jointly with the neighbors to the south. The prairie portion was professionally restored in 1999 and includes over a mile of mowed paths meandering through it and the woods. Enjoy a hike right out your front door and take in the native plants that emerge during the spring, summer and fall, or snowshoe on your private trails in the winter. It's not uncommon to see deer, migratory birds and waterfowl, eagles, owls, and other wildlife throughout the year. Surrounded by the river with unobstructed views, woods and prairie, this rare opportunity is a nature lover's dream.



GUIDE TO THE ROCK RIVER

PROVIDED BY: *THE ROCK RIVER HOMEOWNERS ASSOCIATION*

P.O. Box 2813, Loves Park, IL 61111

* Safety on the Rock River is our #1 concern.

ROCK RIVER

As shown on this map:
 Width: Averages 350 feet
 Depth: Varies
 4 feet, plus, in channel
 Islands: 1
 Bridges: 9
 Navigatable length: 13 mi.
 Tributaries: 4 creeks
 Number of river residents:
 Approximately 900

NORTH END OF RIVER

CAUTION: Very shallow water north of the Roscoe Bridge.

MARKERS ON THE BRIDGES

↑↓ GREEN SIGNS WITH ARROWS - Mark the direction of passage for boats under bridges.
 ■ RED MARKER SQUARES - Mark the bridge supports...Pass between them and under the reflective green and white arrows on bridge.

RIVER RESTRICTIONS - "High Water No Wake"
 "River Closings" may also be posted on bridges.

KEY

- B** Beach
- S** Shallow
- L** Launch/Ramp
- R** Restrooms
- Known Sandbars

***PLEASE HELP TO KEEP OUR RIVER CLEAN....
 ...AND FREE OF LITTER!!**
 "The ducks, wild geese, beaver, muskrat, walleye, bass, catfish, and water skiers will appreciate it!"

"RIVER CONDITIONS HOTLINE"
815-316-8888

EMERGENCY PHONE NUMBERS:

Always call... 911 ...first!!!

Then call the Sheriff's River Patrol

815-319-6317

© R.R.H.A. 1999...Printed by A+ PRINTING / JES

SOUTH END OF RIVER

CAUTION:

*Use proper lights from sunset to sunrise.
 *No fishing is allowed off bridges.

* Watch carefully for small water craft, debris and people in the water. (i.e. water skiers)
 *Think of the river as a highway. Stay to the right.
 *Watch for sandbars and shallow areas.

KEY

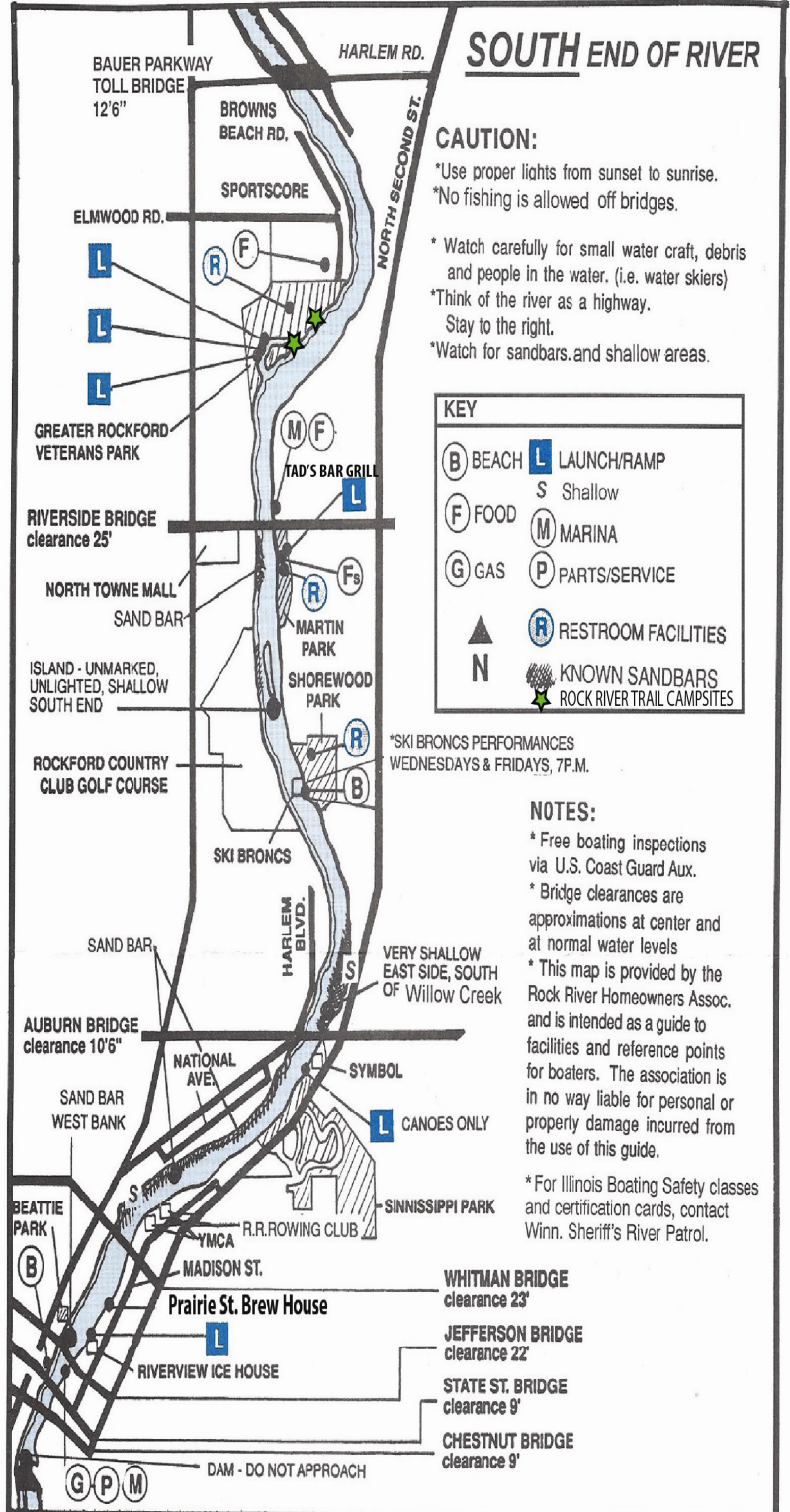
- B** BEACH
- L** LAUNCH/RAMP
- S** Shallow
- F** FOOD
- M** MARINA
- G** GAS
- P** PARTS/SERVICE
- R** RESTROOM FACILITIES
- N** KNOWN SANDBARS
- ROCK RIVER TRAIL CAMPSITES

*SKI BRONCS PERFORMANCES
 WEDNESDAYS & FRIDAYS, 7P.M.

NOTES:

* Free boating inspections via U.S. Coast Guard Aux.
 * Bridge clearances are approximations at center and at normal water levels
 * This map is provided by the Rock River Homeowners Assoc. and is intended as a guide to facilities and reference points for boaters. The association is in no way liable for personal or property damage incurred from the use of this guide.

* For Illinois Boating Safety classes and certification cards, contact Winn. Sheriff's River Patrol.



SAFETY GUIDELINES:

This guide is in compliance with the laws and ordinances of the U.S. Coast Guard and the Winnebago County Sheriff's Dept./River Patrol.

- Speed limits are 45mph during daylight, 25mph from sunset to sunrise.
- Water-skiing after sunset is extremely dangerous and unlawful.
- Open exhaust boats are against State Law.
- Polluting and littering of the river is prohibited. This means yard waste also.
- Proper boat lighting is required from sunset to sunrise.
- Driving a boat while intoxicated with result in a "O.U.I." citation.
- Children under the age of 10 cannot operated any motorized watercraft; from ages 10-12 they must be under direct control of parent or guardian.
- Young adults (age 18 years), in order to operate a motorized watercraft, must carry an Illinois State Certification card as proof that they have completed a boating safety course.
- All boaters must observe the "No Wake" zones.
- Safety equipment must comply with the U.S. Coast Guard and IL Dept. of Natural Resources regulations
- No person may operate a watercraft under 26 feet in length unless a Type I, Type II, Type III or Type V personal floatation vest is being properly worn by each person under the age of 13 on board the watercraft at all times in which the craft is underway.

We still are selling RRHA river shore signs for \$40.00 each. You can send a check to Rock River Homeowners Association, PO Box 2813 Loves Park, IL 61111 or pay with paypal on the website. (with the convenience fee) Please fill out the information below:

Name: _____

Address: _____

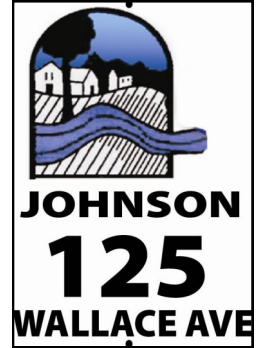
Phone: _____

Name on sign: _____ (first or last name, limit to one line)

Address numbers: _____ (will be boldest)

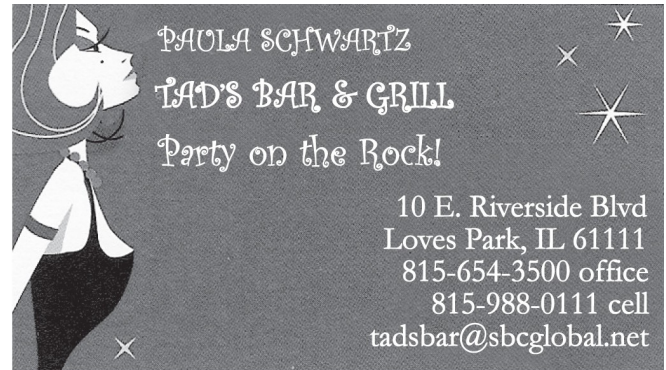
Street name: _____

These are usually displayed on the shore and used for waterfront address location, or emergency boating help. These also make great gifts! For Father's Day, Mother's Day and housewarmings. They are 12" x 18" aluminum



ARE YOU NEW TO THE RIVER??

Welcome and here's your chance to get the scoop on what you need to know about what's going on in that beautiful, wet watery "street" in your back yard! You'll get inside information on concerns being addressed, events going on and get to meet experienced "river folk" that can answer most questions you might have or direct you to someone who can. Plan on keeping in the loop and join the Rock River Homeowners Association today! You don't want to miss any of the excitement and fun! Send your membership application in! today!



NEWSLETTER ADVERTISING: Ads will be run 3 times beginning with our Spring Newsletter. Anyone that wants to start advertising at a different time of the year will pay only the prorated amount for the balance of the year.
Ad Sizes—Business card \$100 1/2 page \$280
Make checks payable to RRHA Advertising
PO Box 2813, Loves Park, IL 61132-2813
Email print ready ad or info you want published to:
Asigndesigns@aol.com 815-985-2355
Please support our advertisers! Remember, For Sale or Want to Buy ads are FREE for members! RRHA reserves the right to locate the ad within the newsletter and also the right to refuse ads deemed inappropriate. Call for further details.

DON'T FORGET YOUR ORANGE SKI OR TUBING FLAGS! CAN BE PURCHASED OFF OF STEVE LUCAS'S DOCK!

FLY YOUR FLAG

ROCK RIVER HOME OWNERS NAUTICAL SILK SCREENED NYLON BOAT FLAGS. \$25.00 EACH

Flags are 12" x 18" inches with triple sewn hems and brass grommets. If you're a proud river home owner, this will look great on any boat for your river excursions. All proceeds go to future river projects!



Mail \$25 to Rock River Home Owners, po box 2813, Loves Park, IL 61111 and one will be mailed to you, or call Mary Johnson at 815-877-5096 and you can pick one up.

IN SYMPATHY

Our sincere sympathy and condolences to the family and friends of Tim Hendricks, of Machesney Park, IL., who passed in January of 2021. Tim was a long time RRHA board member who contributed many hours to helping in whatever way was needed on the Rock River. His last project was helping with the management and maintenance of the various message centers located at the boat launches and keeping them filled with current information and newsletter copies. His input as a long time river resident was valued, he will be missed!

FLOODPLAIN INFO

Machesney Park has obtained 143 parcels of land from property being demolished in the floodplain, with ongoing plans to do more as funding is acquired. Plans to proceed with the floodplain recreation plans for the empty areas have been postponed for more information on how the village will handle some of the questions being asked by area homeowners.

INVOICE for 2021 Membership (Please put this in your bill paying pile!)**2021 Rock River Homeowners Association Membership Application**

Whether you are joining for the first time, or a long time member renewing, we'd love to have you!

Our mission is to: "Preserve and protect the Rock River environment, enjoyment of the river, and to promote public awareness of river safety."

Membership is \$25 and it is good for one year. It includes the newsletter to keep you informed of events and information, the ability to become a RRHA board member, and to directly make improvements to our great river. We welcome suggestions, and hope to address concerns, as well as to make the river a better place for us all, so please feel free to get involved and fill out the application.

Homeowner(s): _____

Address: _____

City _____ State _____ Zip _____

Phone: _____ Email: _____

(please give us your email address so we can notify you of current concerns and notices) RRHA Zone Number (refer to the board member zones on the address page) _____

Type of Membership: _____ I am a new member _____ I am renewing

Please return this page in it's entirety with your payment of \$25 by August 30, 2021 to:

RRHA P.O. Box 2813, Loves Park, IL 61132-2813

You can also go to the www.rockriverhomeowners.org website and pay via paypal if you'd prefer—

2021 Rock River Homeowners Association**DONATION PLEA**

To support the on-going Rock River improvement and safety projects under the guidance of the Rock River Homeowners Association, we ask that you consider an additional monetary contribution. We ask that you PLEASE support these important addition to our area by sending your membership dues in promptly and if you have just read the newsletters, and not ever sent in your dues, PLEASE help us to support our efforts to make the Rock River a safer place for homeowners and guests alike!

Donations in any amount will be gratefully accepted and appreciated. The Rock River Homeowners Association is a non-profit organization and your donation is tax deductible.

____ I would like to make a one-time donation of \$ _____

I would like to donate \$100 \$200 \$300 \$400 \$500 \$ _____

Please make your checks payable to: Rock River Homeowners Association and mail with your membership dues to the above address.

Thank you! Your Board of Directors

LOST AND FOUND

If you have lost your pier or dock sections, please go to our facebook page, Rock River Home Owners Association, where you can post a photo of your lost or found dock. We have helped a few people locate theirs this way. Be sure to have your name and address on your dock sections if you haven't already to help identify them when so many are similar looking. You can also add some color to the sides if that would help also. Most docks are tied up after removal in the fall, but swift flood waters can break them loose, so being able to identify them is key. We've seen whole boat lifts get carried downstream for blocks during a flood and the only way to find them is to use a locator.



PRSR T STD
 U S POSTAGE
 PAID
 ROCKFORD, IL
 PERMIT NO.781

Or Occupant

Rock River Homeowners Association
P.O. box 2813 Loves Park, IL 61132

The Officers

President	Steve Lucas
Vice President	Chris Whiteford
Treasurer	Ron Neuschwander
Secretary	Mike Dagefoerde

Committee Chairs

Membership	Chip Gammel
Newsletter	Mary Johnson
Dam Operation	Steve Lucas
Website	Chip Gammel

Telephone Numbers

Sheriff's Dept.	815-282-2600-Dispatcher
Sheriff's Dept.	815-319-6317-Shift
Chief Deputy Ditzler	815-319-6312
Coast Guard Auxiliary	815-877-6522
Army corps of Engineers	(309)794-4200
Emergency Services	815-319-6215
River Hotline	815-316-8888
Com-Ed	800-344-7661
Sheriff's Boat cell	815-262-1510

MISSION STATEMENT

The Mission of the Rock River Homeowners Association shall be to preserve and protect the Rock River environment, enjoyment of the river and to promote public awareness of river safety

THE BOARD

<u>NAME</u>	<u>NUMBER</u>
ZONE 1: West side from State St. To Harlem Bridge	
Loyd & Diane Koch	815-968-6685
Kim Bailey	815-262-0576
ZONE 2: West side from Harlem to Roscoe Bridge	
Ron & Sharon Neuschwander	815-654-9276
Mike & Pij Richter	815-654-9621
Chuck & Jane Barber	815-654-9720
Mike & Nancy Dagefoerde	815-623-5045
ZONE 3: East side from State St. to Harlem Bridge	
Steve Lucas	815-654-8742
ZONE 4: East side from Harlem to Roscoe Bridge	
Chris Whiteford	815-243-1999
ZONE 5: North of the Roscoe Bridge	
Bruce Swartz	815-624-2465