



Shorelines

Rock River Homeowners Association Newsletter

P.O. Box 2813 Loves Park, IL 61132-2813

Volume 35 Issue 1

SPRING 2024

Spring is in the air! Well what an unusual winter we had. The weather was more like Denver Colorado. Snow one day and 60 degrees the next. We have had 2 years in a row with below average rain fall which lead to drought river levels. I am hoping we can get some closer to normal precipitation for the farmers, grass mowers and a little more normal river levels. Don't get me wrong, I am very happy we haven't had any flooding in years. The flood of 2019 was unique due to the ground being frozen and a warm rain event.

We have many events happening this summer on our river. The Ski Broncs first show of the season will be at the new show site at Shorewood Park. There was grant money that they have been jumping through the past couple of years to fulfill making Loves Park a National Show Ski Tournament Destination. 1st show is May 24th. They will be hosting the Midwest Regional Show Ski Tournament July 13th and 14th. Then the main event August 9-11th the National Show Ski Tournament. Please bring the family down to Shorewood and see some of the best skiers in the country. There is food and also treats at the event. If you choose, there is even a Beer Tent. These events cost a small fortune to put on and lets hope for warm, dry weather for the club's main revenue generator.

Another tourist attraction coming to Downtown June 21-23rd is the World Wide Wake Association. WWA will have a demo day on Friday followed by Wake Boarding, Wake Skating and Foiling along with Wake Surfing. The event will run from the YMCA to Nicholas Conservatory area of the river.

On June 29th, the 5th Annual Back the Blue Parade will kick off at 2pm from Shorewood Park to Downtown. It's great family fun on a nice sunny day. There are so many great events to take a boat load of guests Downtown and enjoy all summer. From Food Truck Tuesday evenings at Nicholas Conservatory, Ski Broncs Wednesday evening, Dinner on the Dock Thursday evenings and Ski Broncs and City Market on Friday evenings, Tads on the Rock with bands on the patio on Sunday afternoons.

This is our annual membership renewal drive, if you appreciate our efforts to keep our river safe for everyone's enjoyment, would you fill out the renewal form and send in your \$25 check? We also welcome additional donations that will continue to fund other river projects. We continue to install and maintain all the danger buoys along our area. We also do all bridge pillar lights and replacements when needed. Both of these help to make boating safer for all who use the river. We continue to work with Sheriff Gary Caruana and Com Ed to maintain our river at a recreational level.

The best way to stay up to date is our Rock River Homeowners Association face book page, that is updated weekly with any updates on river levels and river restrictions.

There is so much to see and do in our short season in the Midwest. Looking forward to an enjoyable and safe summer of 2024 Boating Season to all of my fellow river residents. Stay safe everyone!

See you on the water!

Steve Lucas,

Rock River Homeowners Association President



**Honest.
Local.
Dependable.**

Serving Residential and Commercial
Customers Since 1986.

REQUEST AN ESTIMATE

Roofing, Siding and Remodeling

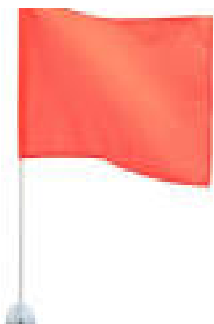
815-243-1999

cjwhitefordcontracting.com

NEW INFO PROGRESSIVE BOAT POLICIES FOR TOWING

Sign & Glide® On-Water Towing Current customers: call 888-955-025 for help now. Add Sign & Glide, and you'll never have to worry about on-water breakdowns again. If your boat is disabled on the water, we'll pay for on-water towing, jump starts, soft un-groundings and fuel delivery. Simply call our dispatch center or use our app and we'll arrange for the tow and pay the tow operator directly. You pay nothing out of pocket, except the cost of the delivered fuel—just sign and glide! You can add this to your Progressive boat insurance policy at any time. **How long does it take to get service?** It usually takes about 45-60 minutes for the licensed tow operator to arrive at your location, although wait times may be longer during peak periods. **Is there a deductible or number of times I can use this service?** There is no deductible and no predetermined limit to the number of times you can use this service. (see disclosure on website) You'll pay \$0 out of pocket. If you arrange your tow directly, without going through our dispatch center, reimbursement is available with limits of \$250/per hour or \$3,000/per disablement. **How much does Sign & Glide cost?** It only costs \$30/year in all states except Florida (\$50/year) and is available for any boat or PWC on your policy. **What if I'm off water and my boat needs to be towed?**

Boat roadside assistance is automatically covered if you have a trailer listed on your policy. If your boat trailer or tow vehicle is disabled, we'll tow you to the closest repair facility. **The approved area Sea Tow provider is Rock River Enterprise, (815)243-8742**



DON'T FORGET YOUR ORANGE SKI OR TUBING FLAGS! CAN BE PURCHASED OFF OF STEVE LUCAS'S DOCK!

Illinois law defines a "ski flag" as; a red or orange flag measuring no less than 12 inches on each side, in the shape of a square or rectangle and mounted or displayed on a motorboat in such a manner as to be visible from every direction. This is used when towing skiers, tubing or wake boarding. Please take them down when not towing anyone.

BRIDGE NAVIGATIONAL HEIGHT SIGNS

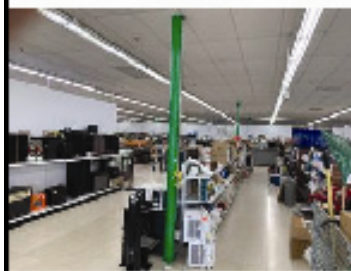
When you're navigating up or down the river and going under the various bridges, look for the "Arrow & TALL" signs on North and south areas of the bridges, for the best boat navigation under the bridge. The preferred space between the pylons will be marked with Arrow signs, and under some of the lower bridges, a "TALL" sign will guide you to the tallest part of the bridge. This is especially helpful during high water if you have a taller boat or boat structure. The tallest place to go under on the State Street Bridge is to the far left. Lower your bimini all the way on pontoons and caution with a ski tower!



986 W. Riverside Blvd.
Rockford, IL 61103
815-654-7296

Who's Your Daddy, PAWN DADDY!

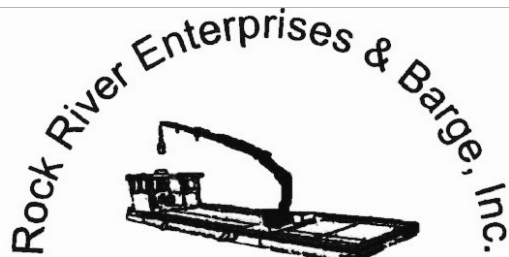
Stop in and check out our huge selection of merchandise in our newly expanded sales floor. We Pawn, Buy and Sell Gold, Silver, Electronics, Jewelry, Tools, Musical Instruments, Household Appliances, Knives, Jerseys, Collectibles and so much more!



Past and Present Rock River Homeowners Association Projects

If you're wondering where your dues and other donation monies are being used to improve our Rock River, here are just a few of the completed and on going Rock River improvements your association has accomplished! (Not in any specific order!)

1. Installed commercial marine navigational solar lights on bridges and maintain with new bulbs and batteries when needed. If you boat at night, these are a great help to see what pass to use and where the supports are.
2. Installed directional arrow & TALL navigation signs on the bridges to help guide boat traffic under bridges.
3. Purchased additional buoys for no wake and hazard areas and installed flashing lights on them.
4. Purchased a new Bimini shade top for the Sherriff's patrol boat.
5. Installed and maintain news and information stations at launch areas.
6. Installed navigation solar light for entry to Sports Core launch on shore.
7. Purchase, installation and yearly fees of an official U.S.G.S electronic gauge at Davis Park at the dam for spring of 2015, this is great importance to everyone viewing the water level gauges, as it will give the level at the dam.
8. Create and maintain a professional Website that shows all area river gauges in one page, and other important Rock River information to home owners and boaters.
9. Donate money to the Ski Brones yearly for their program to further the Rock River's value as an entertainment venue.
10. Publication of the Rock River Homeowners Association Newsletter to keep homeowners and businesses on the river informed.
11. Support by board members and homeowners by volunteering during Rock River cleanup events.
12. Removal of trees to safer areas after flooding.
13. NO WAKE signs and RIVER CLOSED signs at boat launches during high water and flooding.



Steve Lucas, Owner

6212 Park Ridge Rd. Loves Park, IL 61111

815-543-8742 (office) 815-243-8742 (cell) 815-654-8772 (fax)



Dock system for multiple boats



Dock system with benches & ramp

My fellow Rock River residents, I have been selling boat lifts and docks for 35 years on our beautiful Rock River. I would have to say I love the river and all it has to offer. Whether having fun on it in the summer or just looking at it on a cold winter day, I would not have asked for a better place to live. During the summer months after all the docks are in, I am able to help a few residents with shoreline work. Whether it's a small repair or a major job, I take great pride in every job. My goal is to have my work last a lifetime. I also do many odd jobs like trimming river trees that are only accessible by water. I know that I am sometimes hard to get a hold of, but once I commit to a job I make sure the work is done to the best of my ability. I look forward to the remaining summer with great excitement. If I can help you with a project, just drop me a message or send a text. Thanks again for the past 35 years and I look forward to the next 35!

Steve Lucas

Tad's
On The Rock

CASUAL RIVERFRONT DINING ALONG THE ROCK RIVER
LOCATED AT 5904 PARK RIDGE ROAD, LOVES PARK
LIVE MUSIC ON WEEKENDS ALL SUMMER LONG!
PUBLIC DOCKS TO PULL UP TO WHILE YOU
ENJOY YOUR TIME AT OUR TIKI BAR OF
OF SITTING ON THE DECK WITH A COLD BEVERAGE!

GAS IS AVAILABLE

GAS AVAILABLE 10:30AM - 8PM
 FOR SERVICE SEE DOCKSIDE BAR OR
 HOSTESS STAND FOR SERVICE

HUNGRY? THIRSTY?
 PSB HAS YOU COVERED!
 ORDER FOOD HERE >>>
 PICK UP DRINKS AT THE BAR

RENTAL SLIPS NOW AVAILABLE AT PRAIRIE STREET!
 EMAIL YACHTCLUB@PSBREWINGCO.COM FOR MORE INFO

Do You Make These 3 Boating Safety Mistakes? NEWS from BoatUS Boat Owners Association of The United States

A look at the data shows where you can improve safety aboard ANNAPOLIS, Md., June 30, 2020 – Most boaters don't like making mistakes, especially when it comes to safety. With the recent release of the U.S. Coast Guard's 2019 Recreational Boating Statistics, the BoatUS Foundation for Boating Safety and Clean Water recommends avoiding these three common boating mistakes to increase safety for all aboard.

1. Using your cellphone to make a call, check social media, use a nonboating app, send emails, watch videos or anything else that distracts you from safely operating your boat. This all adds up to operator inattention and improper lookout, which combined with operator inexperience, excessive speed, and alcohol use rank in the top five primary contributing factors in accidents. Just like you do in your car, stay off your phone or other portable devices. Boaters should learn the S.C.A.N. (Search, Concentrate, Analyze, and Negotiate) method to help you navigate safely and stay clear of other traffic.

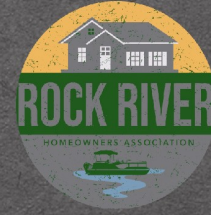
2. Not taking a boating safety course. Many boaters only learn about boating safety from family or friends, which may not be the best education. Where instruction information was known, the 2019 report notes that 70% of deaths occurred on boats where the operator did not receive boating safety instruction. Don't wait until your state requires boating safety instruction – taking a course now will improve your chance for a safe day on the water. The BoatUS Foundation offers the only free, NASBLA-approved online boating safety course for 36 states.

3. Allowing guests to consume unlimited amounts of alcohol aboard your boat, even if the captain is sober. Recreational vessels operate under a wide range of hazardous conditions from the hot blazing sun to wind-whipped waves kicked up by a late afternoon thunderstorm. All of these combined with alcohol create a challenge for the person at the helm, who is legally responsible for everyone aboard. Alcohol use is the leading known contributing factor in fatal boating accidents, and statistics show it may be better to save it for when you and your guests are safely back at the dock.

NEW FOR ROCK RIVER HOMEOWNERS ASSOCIATION! NEW CUSTOM T-SHIRTS AND HOODIES!

CUSTOM PRINTED APPAREL

LOVES PARK, ILLINOIS

**Type of Garment:**

T-Shirts \$20 one color print
\$25 full color print

Garment Color: Please Mark X

Heather Charcoal [], Heather Grey []

Heather Red [], Heather Blue []

Type of Garment:

Hoodies \$40 one color print
\$45 full color print

Garment Color: Please Mark X

Heather Charcoal [], Heather Grey []

Heather Red [], Heather Blue []

Garment Size: Please enter quantity of each size

S [], M [], L [], XL [], 2XL []

Garment Size: Please enter quantity of each size

S [], M [], L [], XL [], 2XL []

Print Color: Please Mark X

Black [], White [], Full Color []

Print Color: Please Mark X

Black [], White [], Full Color []

Send form with shirt choices and color of shirt and print choices with check to RRHA
PO Box 2813, Loves Park, IL 61132-2813



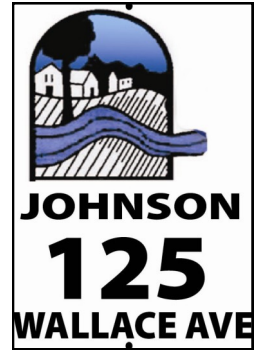
if more than one ordered, please list on a separate sheet for type of shirt, color of shirts and color of print with sizes.

ASKING FOR EVERYONE'S HELP!

We are asking everyone to please help support the Rock River Homeowners Association by turning in your membership of \$25 this year. We have had roughly 900 homes and businesses on our stretch of the Rock River. During the last 10 years before Covid hit, we would have 250 to 300 members pay their dues. During the past two years, we have only had 150 renew their memberships. We have also lost around 140 homes due to the FEMA flood buyout program, and this resulted in having lost residents permanently in the Machesney Park part of the river due to this buyout of flood homes. We're here to serve our residents, please send in your dues to help us keep the river a fun and safe place in our community!

We still are selling RRHA river shore signs for \$40.00 each. You can send a check to Rock River Homeowners Association, PO Box 2813 Loves Park, IL 61111 or pay with paypal on the website. (with the convenience fee) Please fill out the information below:

Name: _____
 Address: _____
 Phone: _____
 Name on sign: _____ (first or last name, limit to one line)
 Address numbers: _____ (will be boldest)
 Street name: _____



NEWSLETTER ADVERTISING: Ads will be in the Spring Newsletter. Anyone that wants to start advertising at a different time of the year will pay only the prorated amount for the balance of the year.

Ad Sizes—Business card \$100 1/2 page \$280

Make checks payable to RRHA Advertising

PO Box 2813, Loves Park, IL 61132-2813

Email print ready ad or info you want published to:

Asigndesigns@aol.com 815-985-2355

Please support our advertisers! Remember, For Sale or Want to Buy ads are FREE for members! RRHA reserves the right to located the ad within the newsletter and also the right to refuse ads deemed inappropriate. Call for further details.

ARE YOU NEW TO THE RIVER??

Welcome and here's your chance to get the scoop on what you need to know about what's going on in that beautiful, wet watery "street" in your back yard! You'll get inside information on concerns being addressed, events going on and get to meet experienced "river folk" that can answer most questions you might have or direct you to someone who can. Plan on keeping in the loop and join the Rock River Homeowners Association today! You don't want to miss any of the excitement and fun! Send your membership application in! today!

FLY YOUR FLAG

ROCK RIVER HOME OWNERS NAUTICAL SILK SCREENED NYLON BOAT FLAGS. \$25.00 EACH

Flags are 12" x 18" inches with triple sewn hems and brass grommets. If you're a proud river home owner, this will look great on any boat for your river excursions. All proceeds go to future river projects!



Mail \$25 to Rock River Home Owners, po box 2813, Loves Park, IL 61111 and one will be mailed to you, or call Mary Johnson at 815-985-2355 and you can pick one up.

WHERE CAN WE DISPOSE OF OLD BOAT GASOLINE?

The Household Hazardous Waste site, 3333 Kishwaukee Street, Rockford will accept only household waste and gasoline in a maximum amount in 5 gallon cans. This site does not return the containers you bring in, Be prepared to leave the container unless you put them in other containers clearly marked. Gas must be in clearly marked proper containers. Hours are Saturdays 8am to 4pm, Sundays noon to 4pm. Closed when a major holiday falls on a weekend. Follow the signs that say "Household Hazardous Waste" once in the drive. For a complete list of rules and other household chemicals they accept, please go to the website. Knib.org.

INVOICE for 2024 Membership (Please put this in your bill paying pile!)**2024 Rock River Homeowners Association Membership Application**

Whether you are joining for the first time, or a long time member renewing, we'd love to have you!

Our mission is to: "Preserve and protect the Rock River environment, enjoyment of the river, and to promote public awareness of river safety."

Membership is \$25 and it is good for one year. It includes the newsletter to keep you informed of events and information, the ability to become a RRHA board member, and to directly make improvements to our great river. We welcome suggestions, and hope to address concerns, as well as to make the river a better place for us all, so please feel free to get involved and fill out the application.

Homeowner(s): _____

Address: _____

City _____ State _____ Zip _____

Phone: _____ Email: _____

(please give us your email address so we can notify you of current concerns and notices) RRHA
Zone Number (refer to the board member zones on the address page) _____

Type of Membership: _____ I am a new member _____ I am renewing

Please return this page in it's entirety with your payment of \$25 by September 30, 2024 to:

RRHA P.O. Box 2813, Loves Park, IL 61132-2813

You can also go the the www.rockriverhomeowners.org website and pay via paypal if you'd prefer—

QR CODE FOR MEMBERSHIP PAYMENT WILL TAKE YOU DIRECTLY TO THE RRHA WEBSITE

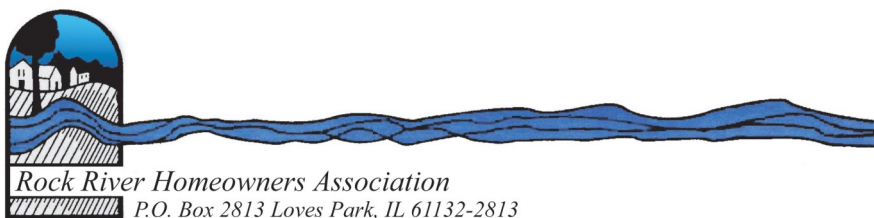
**2024 Rock River Homeowners Association****DONATION PLEA**

To support the on-going Rock River improvement and safety projects under the guidance of the Rock River Homeowners Association, we ask that you consider an additional monetary contribution. We ask that you PLEASE support these important addition to our area by sending your membership dues in promptly and if you have just read the newsletters, and not ever sent in your dues, PLEASE help us to support our efforts to make the Rock River a safer place for homeowners and guests alike!

Donations in any amount will be gratefully accepted and appreciated. The Rock River Homeowners Association is a non-profit organization and your donation is tax deductible.

_____ I would like to make a one-time donation of \$ _____

I would like to donate \$100 \$200 \$300 \$400 \$500 \$ _____



PRSR STD
U S POSTAGE
PAID
ROCKFORD, IL
PERMIT NO.781

Or Occupant

Rock River Homeowners Association
P.O. box 2813 Loves Park, IL 61132

The Officers

President	Steve Lucas
Vice President	Chris Whiteford
Treasurer	Ron Neuschwander
Secretary	Mike Dagefoerde

Committee Chairs

Membership	Chip Gammel
Newsletter	Mary Johnson
Dam Operation	Steve Lucas
Website	Chip Gammel

Telephone Numbers

Sheriff's Dept.	815-282-2600-Dispatcher
Sheriff's Dept.	815-319-6317-Shift
Chief Deputy Ditzler	815-319-6312
Coast Guard Auxiliary	815-877-6522
Army corps of Engineers	(309)794-4200
Emergency Services	815-319-6215
River Hotline	815-316-8888
Com-Ed	800-344-7661
Sheriff's Boat cell	815-262-1510

MISSION STATEMENT

The Mission of the Rock River Homeowners Association shall be to preserve and protect the Rock River environment, enjoyment of the river and to promote public awareness of river safety

THE BOARD

<u>NAME</u>	<u>NUMBER</u>
ZONE 1: West side from State St. To Harlem Bridge	
Loyd & Diane Koch	815-968-6685
Kim Bailey	815-262-0576
ZONE 2: West side from Harlem to Roscoe Bridge	
Ron & Sharon Neuschwander	815-654-9276
Mike & Pij Richter	815-654-9621
Gabe Grindle	815-703-8194
Mike & Nancy Dagefoerde	815-623-5045
ZONE 3: East side from State St. to Harlem Bridge	
Steve Lucas	815-654-8742
Chad Elston	815-703-7509
ZONE 4: East side from Harlem to Roscoe Bridge	
Chris Whiteford	815-243-1999
ZONE 5: North of the Roscoe Bridge	
Bruce Swartz	815-624-2465